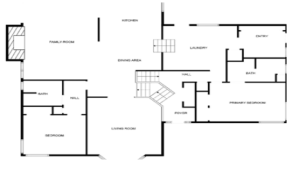


**SOUTHWEST AUCTION SERVICE**  
**Mareth Real Estate and Land Auction!**  
 Office: 417-652-7540 Website: [www.swaauction.com](http://www.swaauction.com)  
**DATE OF AUCTION: Saturday Oct. 12th**  
**Starting Time: 9:00 AM**  
*Rain or Shine! Concessions Available!*  
**Location: 7125 FR 2057 Monett MO 65801**



**Auctioneers' Statement:** This will be one of the best auctions of 2024!. SW Auction is honored to be hosting this event on behalf of the Tom Mareth family. The Dairy farm is one of the largest in the Barry County area. The dairy cows have been sold recently however, the dairy is still fully functional with all computer systems still intact. There will be high dollar incentives to increase this operation provided by the NRCS office. The near 1/2 of a million dollar expansion money has already been approved and is transferable to the new buyer. Also if the new buyer choses not to maintain the dairy (according to the NRCS office) there will be \$150,000.00 - \$200,000.00 available for lagoon closure. (The new buyer would apply directly with the NRCS office for available funding). SW Auction does not imply nor take any responsibility for NRCS Funding! Also included in this auction: All the machinery, haylage, tools etc. in which there is a lot. We will start the auction at 9:00am with tools & smaller equipment. **properties will sell at 12 noon! (Both properties will be auctioned from the Dairy Farm location at 7125 FR 2057 Monett, MO)**

Visit our website @ [WWW.SWAAUCTION.COM](http://WWW.SWAAUCTION.COM) we also offer online bidding



**Land and Home**

**Land Option #1**

**150+/- Acres and Home**— Deer & Turkey Hunting Paradise, Wooded Back South, Pole barn, 1 Bedroom 1 Bath Home has living rights until the resident passes @250.00 rent monthly.

**Land Sells At Noon!**

**Land Option #2 will be split into 5 tracks and also offered as 1 Lot.**

**Land Sells At Noon!**

**175+/- Acres and Home**—Beautiful acres with a 250-stall dairy barn. The property features three ponds, two massive silage bunkers, and several outbuildings. Included a 3,594 sq ft split-level farmhouse, with 5 bedrooms and 3.5 bathrooms, needs some TLC. Engineering plans have already been drawn up and are ready to take the entire operation fully robotic, and the seller will gladly pass these plans on to the new owner. There has been 5 acres deeded out to occupant out of track 3 on the west side. Also included will be a functioning dairy farm. Tom was approved for a 500K expansion. NRCS confirmed buyer of property would be approved for \$176K to close the lagoon. Buyer can choose either option, both are transferable. Existing NRCS EQIP contract is for \$450K (transferable) and additional \$100k for dairy improvements is available through SWCD which is first come first serve in the county. There is currently no contract with SWCD. (if the buyer wants to close the lagoon an application would need to be turned in for EQIP with NRCS to secure funds)

**Track #1— 40 Acres for crop**

**Track # 2— 40 Acres, Dairy Farm and House sold with 1 pond, dairy barn, silage bunkers and several buildings.**

**Track # 3— 35 Acres for crop includes pond 5 acres removed for occupant**

**Track #4— 40 Acres for crop**

**Track #5— 20 Acres for crop**

**Farm Items, Tractors and Farm Machinery:**

Calf sheds 10 per lot, 7 lots total, Feed bin 3 ton X2 , Troughs X15 , Fimco sprayer, Liquid nitrogen semen tanks X3, Tiller , 3 hole stainless corner sinks X2 , Hot water pressure washer, Plasma cutter hyperthermia Powermax 380, John deere sign, Arcadia 2014 rims, Set of 4 poly feed tanks, Ag pro flush gate, Atv wheels, Squeeze chute, Cherry picker, Engine stand, 4 wheeler sprayer, 12000lb wench, Koster dryer, 6" alum irrigation pipe, 3k fuel tank "containment", Trimming chute brand new used once for cows, 12 pod maxi merge xp vacuum planter, Vogelsang water transfer pump, Kato light pto Generator, Iron horse compressor 220 air, Craftsman toolboxes, Welder Miller thunderbolt, Cadwell irrigation reel, 10' rock roller 1" thick plate 42" tall bearing/oil filled, Commercial generator, Flush value with air bag for a barn, 2 generators, ones a 3 point and 1 on trailer, PTO gen, Air compressor, Tank (sep) w pump, Several steel chainsaws, Electric chain saw sharpener, 4' holly stock bins ,Feed trough with metal frame , Misc portable corral cattle panels, Electric fence charger, 2 well house heaters, Band saw, 2— massive silage part is rylage and 1 pit of corn silage being sold out of the bunkers, 64 sudan 5x6 round bales, 20— grass round bales 5x6, and many more items.

**Tractors and Farm Machinery:**

JD 630 Chopper grass head, Skid steer side shooter attachment, Skid steer attachment ground leveler, JD kifco pump, JD Mower, Boat, 4 wheeler, Field cultivator, Land leveler, Honda 4 wheeler, 2007 Harley Ultra Glide, Classic Little John Boat, Kuhn reel commercial rc 250 total mixed ration, Scrap dump trailer x2, Tool trailer w/ tool boxes, air compressor, 500 gal tank, John deere UTV, JD draw bar, Skid steer attachment, Bale spike JD, Flat bed truck 454 fuel cell 12v pump separate, No till drill JD 1590, JD 60' computerized raven sprayer, Tractor JD , John Deere baler, Case intl square baler, Full frame end dump trailer , Ez haul 7 bale hay trailer 35', GMC general truck , White freightliner truck runs , Peterbilt semi single cab runs , Aeromax 19000 truck , 28' low rider dually tandem axle 20k axle trailer, Peterbilt truck gold with tank bed, 946 JD Mower discbine, Vermeer r2300 hydraulic hay rake, 2 wheel hay teter, Kemper chop head for corn, Bush Hog 28' disc, JD tractor 6615 Hay table 2wd, JD tractor h360, 6140R cab tractor radio and accessories with h360 self leveling loader, Lawn mower jd 318 w blade has tiller, JD tractor with auto steer 7410, JD tractor, New holland hay baler, 2— Large square bailer Case Intl baler ( 1 works 1 for parts, 1-New holland 2x4 square bailer 20' gooseneck trailer— no title, prifert head gate, '06 Deutz with Vaughn Loader, JD 1460, New Holland 1032, JD F932



**Bob Hughes**  
417-652-7540



**417.652.7540**

**SOUTHWEST AUCTION SERVICE**  
 P.O. BOX 534  
 WHEATON, MO. 64874  
 www.swaauction.com



FIRST CLASS MAIL  
 U.S. POSTAGE  
**PAID**  
 PERMIT NO. 534  
 WHEATON, MO 64874

**DIRECTIONS TO AUCTION:**

**FROM WHEATON, MO:** Turn right onto State Hwy 97N Continue onto State Hwy B, Turn left on State Hwy 37 N, Turn Left onto FR 2057 Look for auction signs.

**FROM MONETT, MO:** Continue onto State Hwy 37 toward Purdy, Turn right onto FR 2057, Look for auction signs.

**FROM JOPLIN, MO:** Head north toward I-44BL E/E 7th Street, Take I-44 E toward State Hwy 37 S and US-60 E to S. Eisenhower St in monett. Follow 37 toward Purdy, turn on FR 2057. Look for auction signs.

**FROM ROGERS, AR:** Head North on AR-94 W/N 8th St Toward W chestnut St. Continue onto US-62 E Turn left onto State Hwy 37N Continue State Hwy 37 N Through Cassville into Purdy, Turn left onto FR 2057. Look for Auction Signs.

**Terms of the Auction:**

**Real Estate Buyer's Terms:** 10% of final bid on sale day (**NON-REFUNDABLE**) to be applied to the purchase price! 3% buyer's premium to SW Auction Service. Real Estate Buyers please be aware if you place the winning bid, you will be required to pay a total of 13% on sale day!! Please have your funds pre-approved! The Seller reserves the right to consider the final bid! Real Estate closing will be conducted within 30 days at Barry County Abstract & Title of Cassville, MO

**Note:** Pre-Approved Bidder's may conduct phone bidding if unable to attend by calling (417) 772-8088

Southwest Auction appreciates all of our buyers. You will be treated with respect and consideration. Thank You, Bob Hughes

— Preview by Appointment Only Call 417-235-4452 —

We accept Cash, Good Checks w/ proper ID & Credit Card (5% Convenience Fee) We are not responsible for accidents to man, woman, child or animal. We are not responsible for lost, stolen, or damaged articles or property! All accounts must be settled prior to removal of auction item! Statements made day of auction take precedence over all printed materials! For more pictures visit our website at [www.swaauction.com](http://www.swaauction.com)

